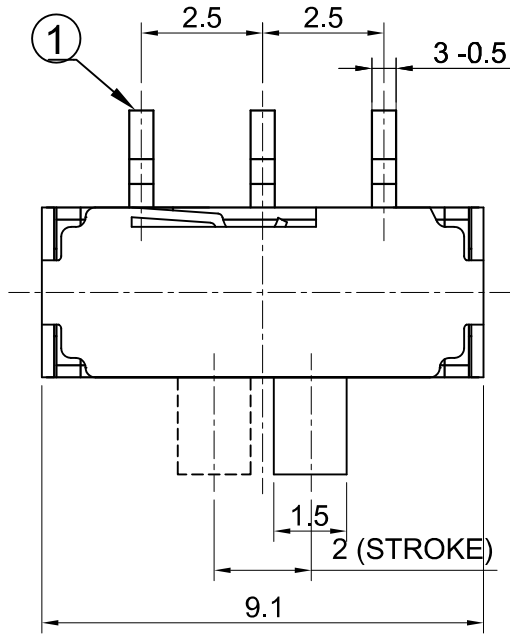
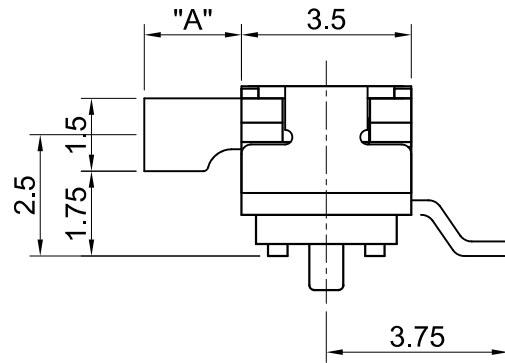
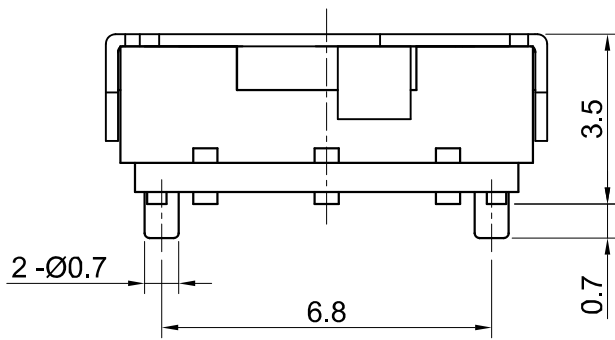
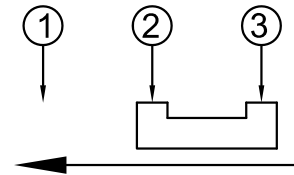


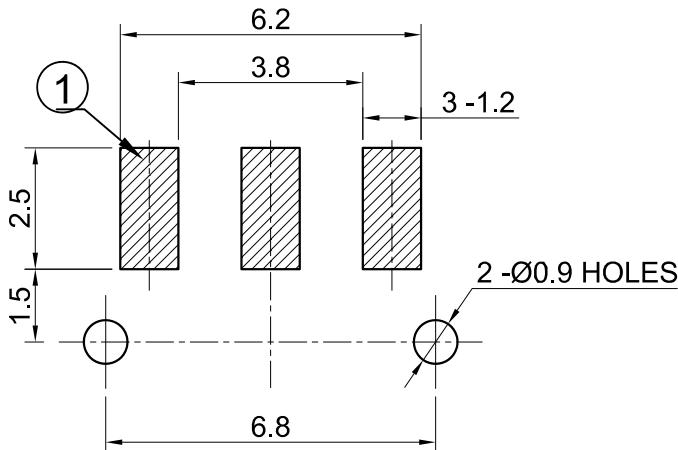
"A"	MODEL NAME
2	CTS-1280
4	CTS-1280A



CIRCUIT DIAGRAM



SMD REFLOW PATTERN



SPECIFICATIONS

1. RATING : DC 6V / 0.3A
2. CIRCUIT : 1C-2P
3. TIMING : NON SHORTING
4. TRAVEL : 2mm ±0.3mm
5. OPERATING FORCE : 200±100gf
6. CONTACT RESISTANCE : 70mΩ MAX.
7. OPERATING LIFE : 10000 CYCLES MIN.
8. TOLERANCE : ±0.3

NO	PARTS NAME	MATERIAL	SPECIFICATION		Q'TY	FINISH	REFERENCE
		GENERAL TORANCE (UNLESS SPECIFIED)	SCALE 6 / 1	UNIT METRIC	TITLE		CTS - 1280 SERIES
		±0.3	THIRD ANGLE PROJECTION	SIZE A4	DOCUMENT NUMBER	R-S1280-AD-01A-A	
					CREATIVE ELECTRONICS CREATIVE ELECTRONICS CO.,LTD. www.creative-elec.com		
		DRAWN BY	CHECKED BY	APPROVED BY			
REV	DESCRIPTION			C.KIM	THIS DRAWING CONTAINS INFORMATION THAT IS PROPRIET TO CREATIVE ELECTRONICS CO.,LTD. AND SHOULD NOT BE USED WITHOUT WRITTEN PERMISSION.		